

## **Id-Home buckles and belts – the desirable fashion must-have, guaranteed to add instant oomph to the simplest of outfits!**

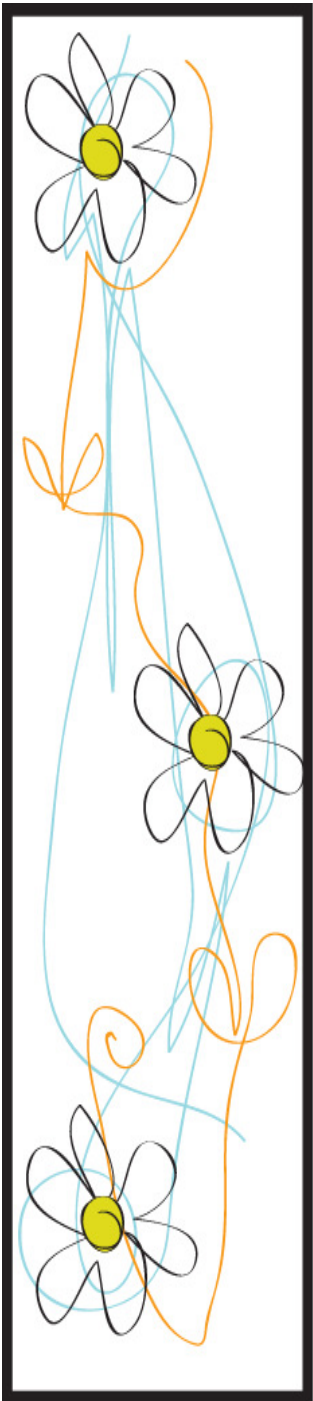
Teamed with a favourite pair of jeans, classic white tee and a pair of Converse, simply add a decorative buckle, for the ultimate style shortcut! From chic engraved silvers and jewel embellished hearts, to retro printed florals and botanical blooms, the current range is truly eclectic – and as the buckles are easily interchangeable, simply swap the buckle to suit your look.

### **Pattern Buckles**

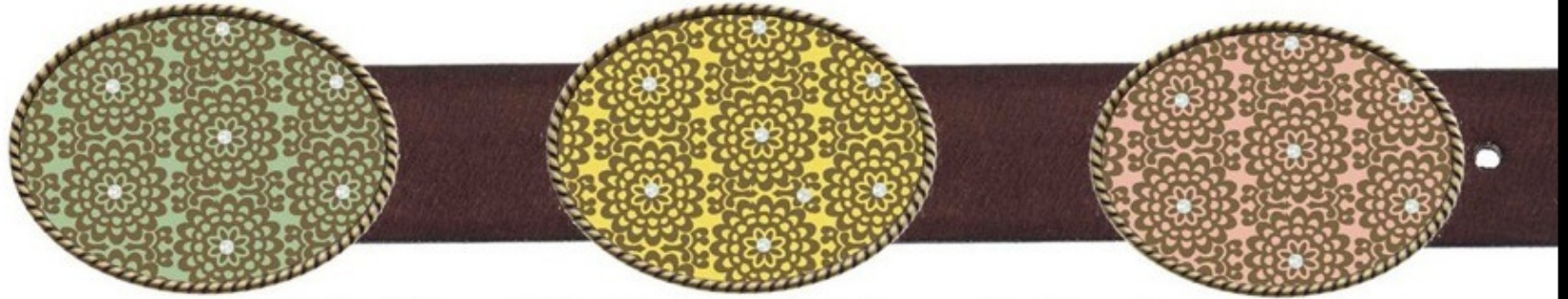
The unique patterned buckles, designed and handcrafted in the UK, offer a stylish solution to the current trend for bold, colourful print! If you're shy with colour, choose a 'quieter' pattern in muted tones of warm grey, duck egg or cream – but for the more adventurous, enjoy the eye-catching impact of vibrant teal, magenta and emerald green. With many designs modestly embellished with a sprinkling of Swarovski crystals, these buckles are an instant wardrobe pick-me-up!

### **Leather Belt Straps**

We have teamed up with a UK supplier, a family company that create wonderfully supple leather belts, made from the highest quality, Italian hides. These belts are a wardrobe investment, that promise to wear beautifully with age. Each belt strap is supplied with a simple pin buckle (for days when you just want a belt to do its job – nothing more!) and the riveted snap-on mechanism, is robust enough to endure the demands of a constantly changing buckle!



## PATTERNED BUCKLES



**AUDIE** with Crystals available in mint green, pale yellow and warm pink



**RUBY** with Crystals available in magenta, teal and olive



**DOTTY** cream on charcoal, black on cream

**SILVANA** neutral



## PATTERNED BUCKLES



**AIMEE** with crystals



**FLORA** with crystals in orange or teal



**MONOCHROME**  
with crystals



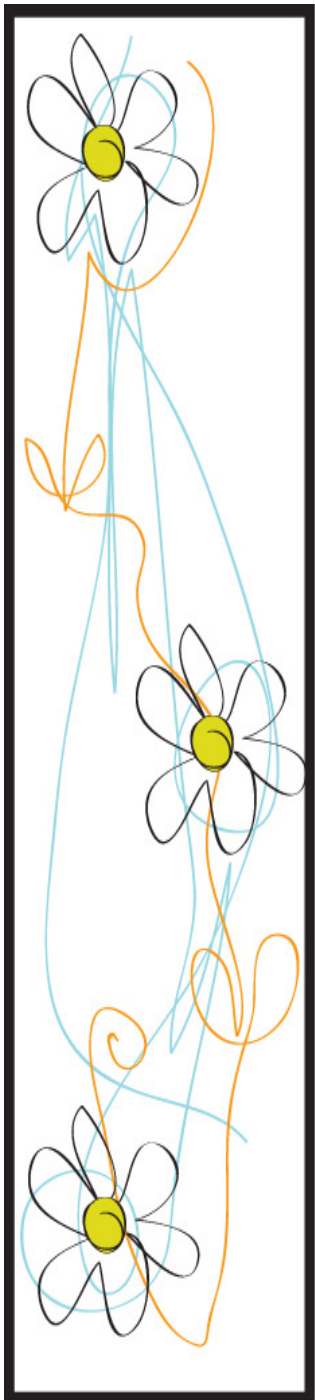
**ZEBRA**

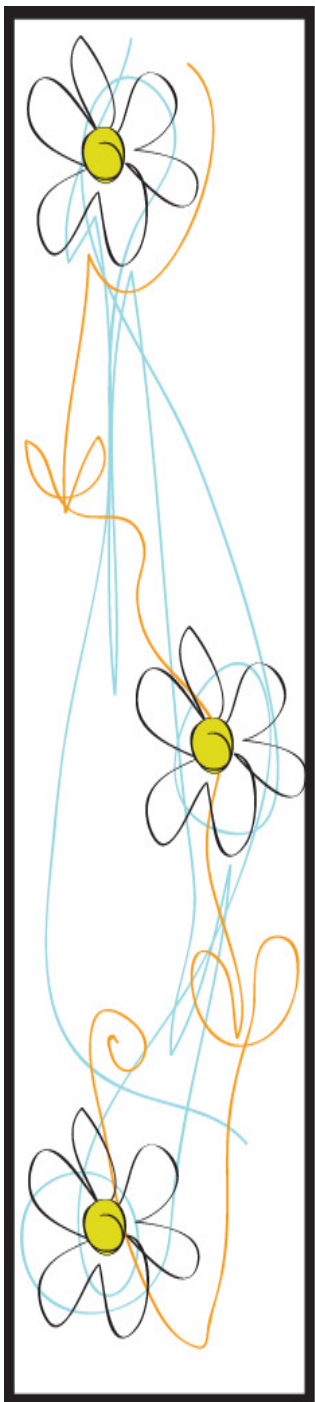


**BIRDIE**



**QUEENIE** with crystals in olive, teal or deep purple





## PATTERNED BUCKLES



**MAGGIE** with crystals in winter white and pale blue



**AGNES** with crystals in pale blue



**LAURA** with crystals in light teal, yellow and warm grey



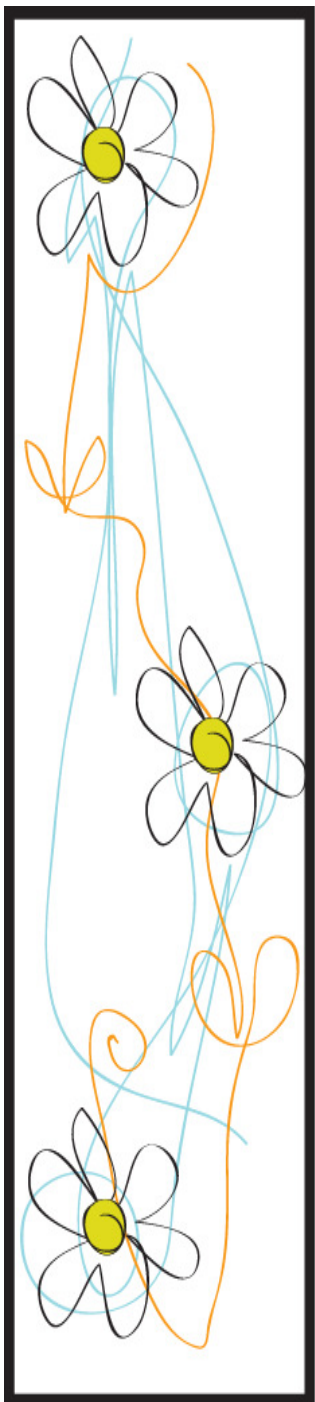
**MAGGIE** with crystals in teal



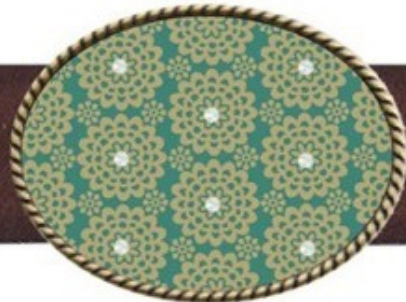
**AGNES** in teal



**FLORA** with crystals in teal



**ANNA** with crystals in navy, crimson or soft teal/taupe



**RUBY** with crystals in blue/green

**MIA** with crystals in teal

**RUBY** with crystals in dirty blue



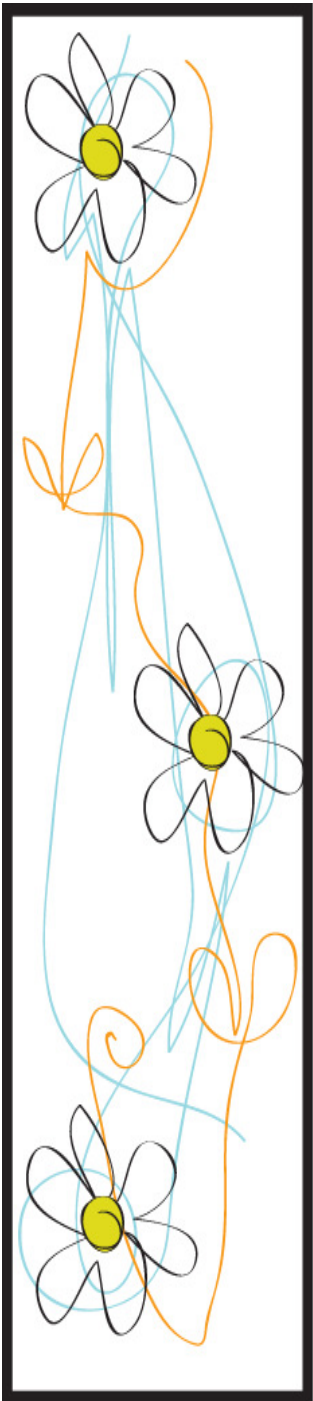
**INDIGO** with crystals

**EVIE** in skye/taupe and olive/blue



**EMMA** with crystals in black or magenta pink

**PATCHWORK** with crystals



## METAL BUCKLES



**WAVY HEART** crystal studded silver heart buckle on a wavy base



**CHLOE** antique silver semi circle with diamante



**PIPED ROSE** antiqued silver with embedded crystals



**FIVE PETALS** antique bronze flower buckle with crystals and diamante



**DAISY DAISY** cream opaque daisy buckle



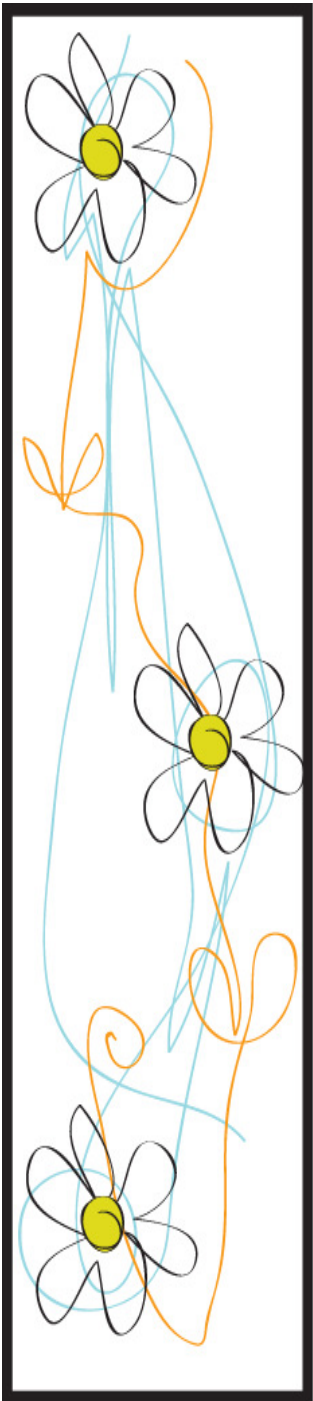
**TWELVE HEARTS** antiqued silver buckle with black crystals



**DAISY DAISY** 'black diamond' daisy buckle



**FIVE PETALS** 'black diamond' flower buckle



## METAL BUCKLES



**BLUE GENIE** antique silver buckle with turquoise highlights



**LOVE HEART** antique silver engraved buckle



**OVAL WITH BRONZE** antiqued silver buckle with bronze rim



**TRIPLE HEART** antique silver engraved buckle



**JEWELLED HEART** antique silver heart buckle with crystals and diamante



**TRIPLE BRONZE HEARTS** antique silver engraved buckle



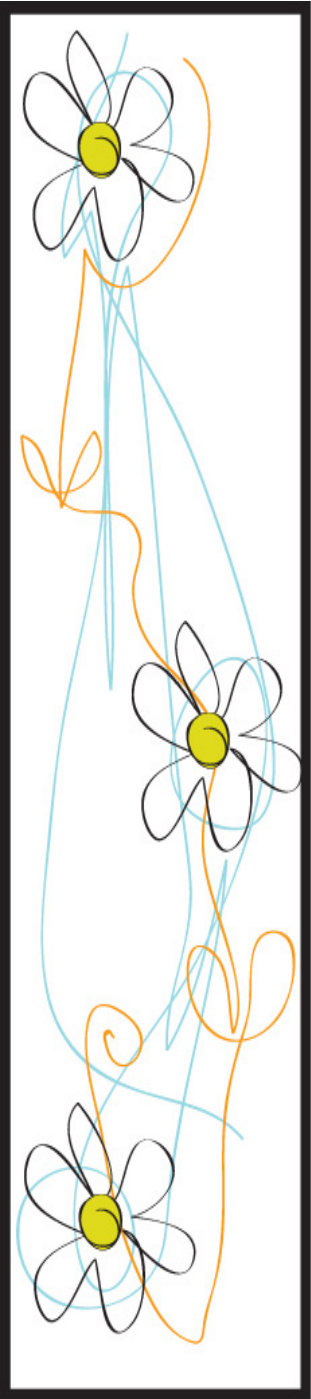
**JAPANESE MAPLE** antique silver engraved buckle



**CAMEO GREY** antique silver buckle with grey catseye & diamante



**VINTAGE WHITE** antiqued silver 'carved' buckle with diamante detail



## METAL BUCKLES



**LUCIA SILVER** antique silver buckle with crystals



**ENGRAVED OVAL** antique silver engraved buckle



**PACIFIC OPAL** antiqued silver carved buckle with turquoise



**CAMEO BLUE** antique silver buckle with turquoise and diamante



**PETIT ANTIQUE** antique silver engraved buckle



**FILIGREE OVAL** antiqued silver buckle with crystal



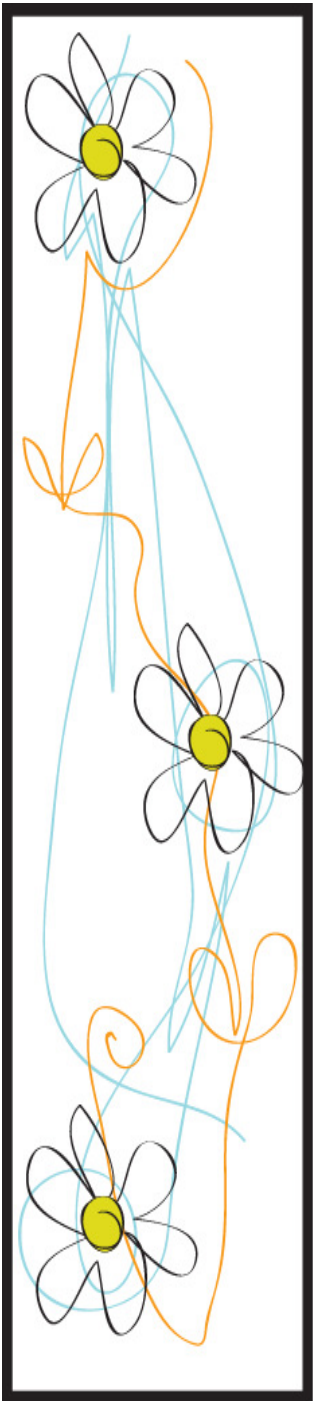
**FILIGREE HEART** antiqued silver buckle with crystal



**SCALLOPED EDGE RECTANGLE** antiqued silver buckle with crystal



**PEACOCK BLUE** antiqued silver buckle with teal enamel



## LEATHER BELTS



**DARK BROWN/CHOCOLATE LEATHER BELT**



**DARK TAN LEATHER BELT**



**BLACK LEATHER BELT**

FREE PIN BUCKLE





## **BELT SIZES**

### **Belt Sizes**

**(30") Size 6/8:** 7 holes, with the central hole at 30"

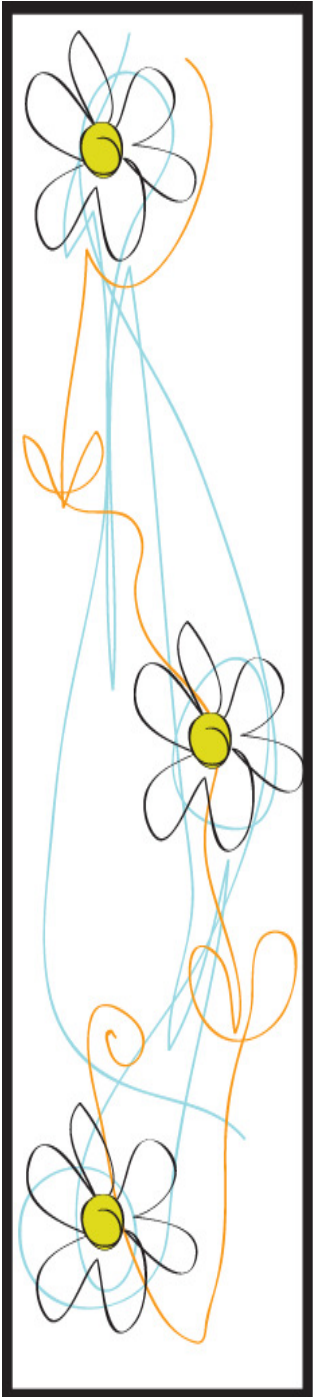
**(32") Size 10:** 7 holes, with the central hole at 30"

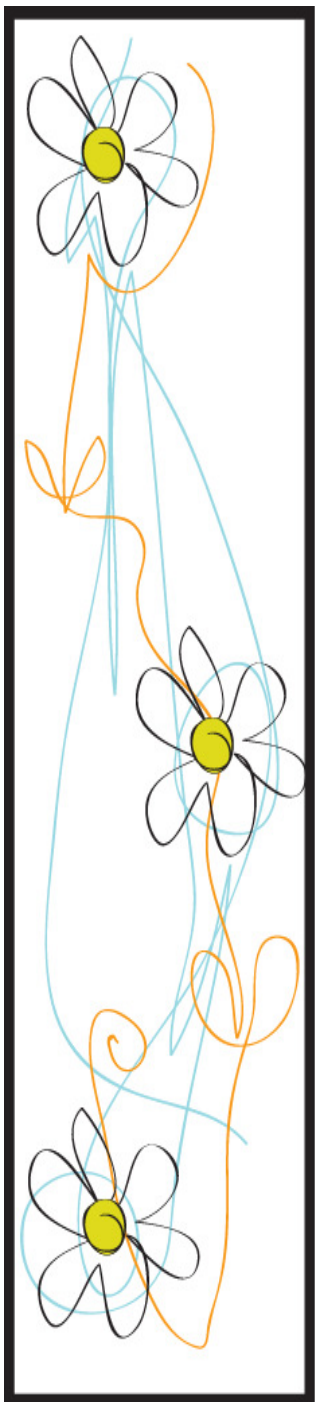
**(34") Size 12:** 7 holes, with the central hole at 34"

**(36") Size 14:** 7 holes, with the central hole at 36"

**(38") Size 16:** 7 holes, with the central hole at 38"

*Larger sizes are available on request.*





## **INFORMATION**

### **Postage & Packaging**

**UK:** Standard post and packing for deliveries within the UK is £4.50. Larger parcels are sent by overnight courier, at a cost of £10.

**Ireland, Channel Islands & International:** please request an estimate.

### **Delivery times**

We would recommend allowing approx. 3-5 working days, from receipt of payment, to delivery. However, if you have a more urgent requirement please let us know, as we can frequently deliver more quickly when pushed!

### **Payment**

Payment can be made by credit card, bank transfer, cash or cheque.

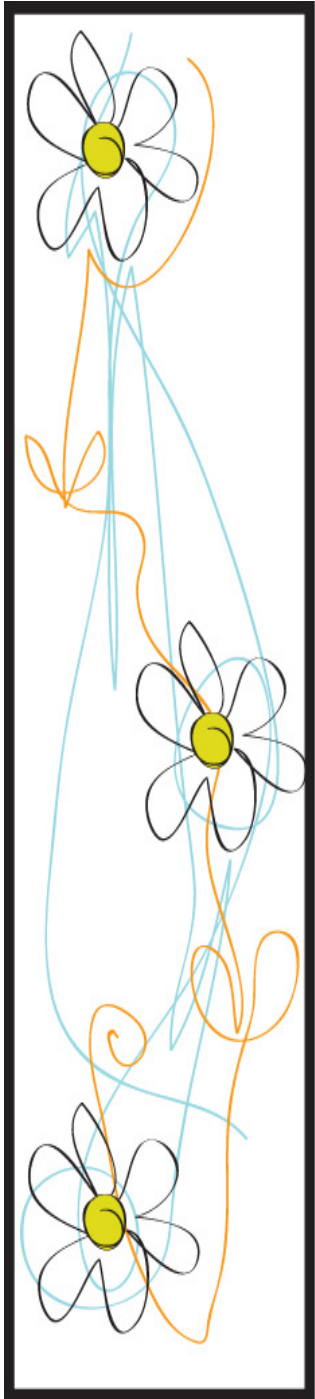
### **Commissions**

We are often asked to create a pattern or colour way, to compliment a specific item of clothing. If you or your customers would be interested in this service, please contact us for further information.

So, hopefully that tells you a little more about what we do, but if you have further questions, please do not hesitate to call or email.

**For more information and to view our entire collection, please visit our website:**

[www.id-home.co.uk](http://www.id-home.co.uk)



## **PRICES**

**LEATHER BELTS £30 each**

**BUCKLES £30 EACH**

**BELT + ONE BUCKLE £55**

**BELT + TWO BUCKLES £80**

**subsequent buckles £25 each**